

**JAD
ZEITOUNI**
VISUAL ARTIST



ABOUT THE ARTIST

Born in Lebanon, Jad Zeitouni is a self-taught artist who favors experimenting with paintings and studying them through practical experiences. His philosophy is that painting is a hidden talent that one has to dig deep enough to discover through a journey of self-discovery and experimentation. An artist of his surroundings everything and everyone around him spark the inspiration of his paintings. His background in engineering usually results in him finding inspiration in different aspects of life that haven't been visited before, such as grass cutters in nature that inspired his series *Landslide: Grass Cutters*.



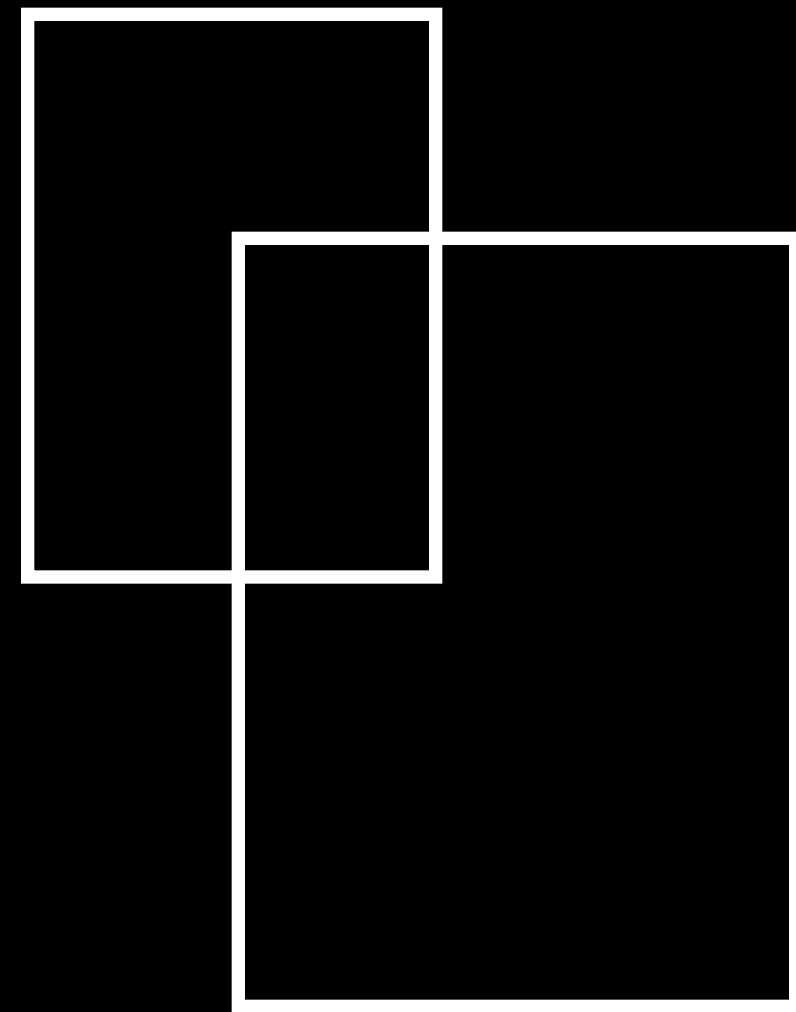
STYLE OF ART

A student of iconic artists like Francis Bacon and Lucien Freud, Zeitouni has formed his original design language around an intersection of abstract and figurative realism. His color pallet is an ocean of a vibrant wide spectrum of colors that portray authentic and intense emotions through rich tones and a variation of saturation. On his canvases, a blizzard of daring and defining brush strokes implies a hard texture and an effect of motion in each of his paintings. To further elaborate the element of motion, he paints his figures in dynamic postures and dimensions often guiding them with rich undertones and shadows.

PROCESS

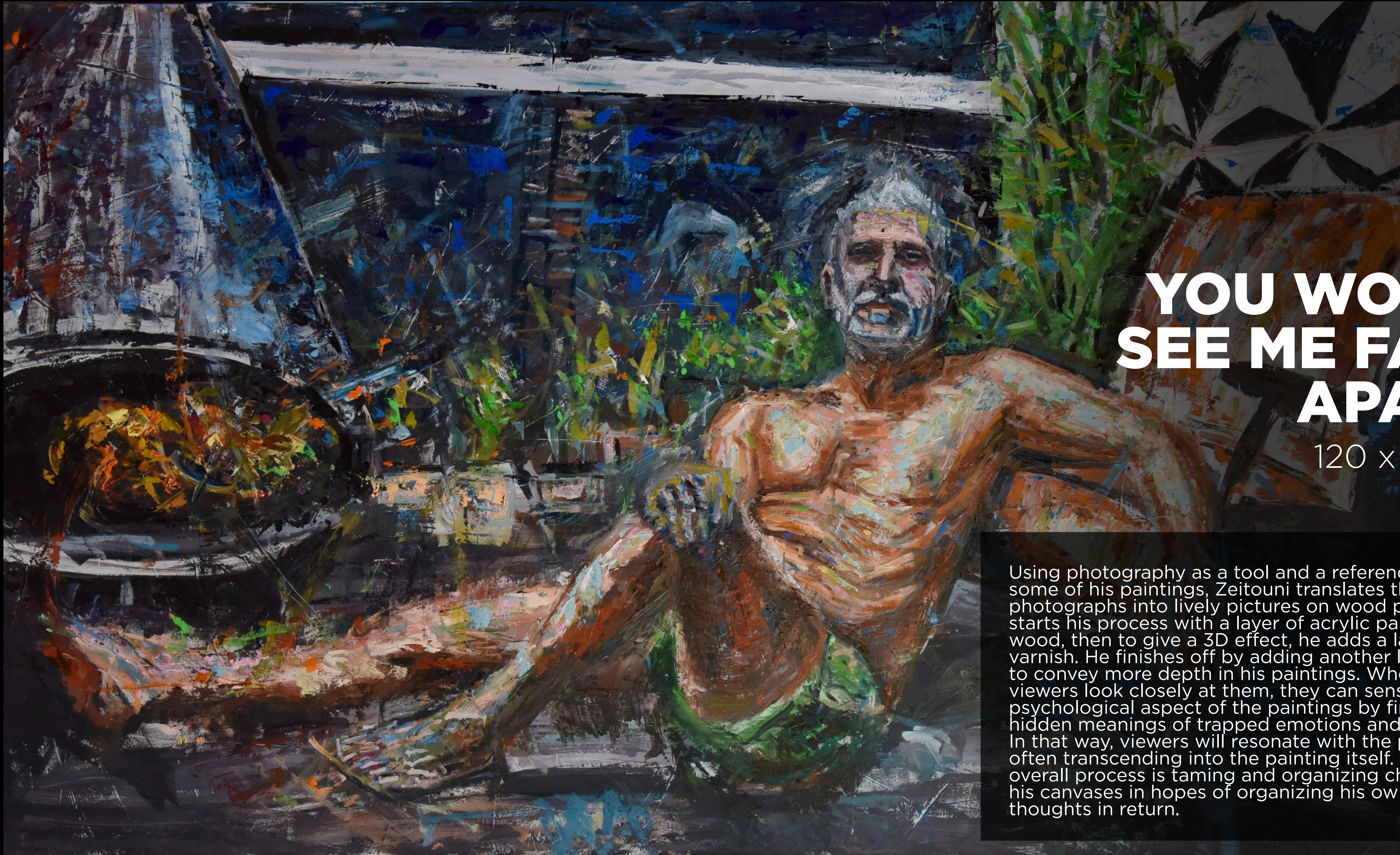
Using photography as a tool and a reference in some of his paintings, Zeitouni translates the photographs into lively pictures on wood panels. He starts his process with a layer of acrylic paint on wood, then to give a 3D effect, he adds a layer of varnish. He finishes off by adding another layer of oil to convey more depth in his paintings. When viewers look closely at them, they can sense the psychological aspect of the paintings by finding hidden meanings of trapped emotions and conflicts. In that way, viewers will resonate with the paintings, often transcending into the painting itself. His overall process is taming and organizing chaos on his canvases in hopes of organizing his own thoughts in return.





COMMISSIONED PAINTINGS

When a painter is approached to convert scenes from everyday life into paintings, it is important to clearly deliver the meaning of the painting while hiding his own twists and tricks in it. Before I paint my clients' requests, I make sure to get to know them more and connect with them on a deeper level so that I can reflect this deeper meaning in my paintings. Through my own unique style, I depict the subjects' personalities and inner conflicts using a wide spectrum of colors and shadows, with a varied range of saturation, and intense strokes of my brush. Forming a bridge between my vision of abstract and realism, I achieve my exclusive style language.



YOU WON'T SEE ME FALL APART

120 x 75 cm
2020

Using photography as a tool and a reference in some of his paintings, Zeitouni translates the photographs into lively pictures on wood panels. He starts his process with a layer of acrylic paint on wood, then to give a 3D effect, he adds a layer of varnish. He finishes off by adding another layer of oil to convey more depth in his paintings. When viewers look closely at them, they can sense the psychological aspect of the paintings by finding hidden meanings of trapped emotions and conflicts. In that way, viewers will resonate with the paintings, often transcending into the painting itself. His overall process is taming and organizing chaos on his canvases in hopes of organizing his own thoughts in return.



RADIANT X SUNSET

85 x 61cm
2024

As a present from a friend, this painting was commissioned to capture a valuable and harmonious moment between the subject and the sunset, now forever immortalized on a canvas. Pictured in a blizzard of icy blues and greens against the warm-toned background, the subject in this painting is in harmony with the sunset's radiation as if the two become one and whole, with the subject radiating inside the sunset itself. The lively brush strokes guide the viewers towards the emotive expressions of the subject intermingling with the sunset in the background. This harmony is presented through a luminous interplay of vibrant colours and expressive brush strokes, where the radiations created by this sunset are exposed in striking hues of yellows against the cool-toned blues. Capturing a moment standing still in time, this dynamic reflects the harmony between the subject and the bursts of the radiant sunset.



DAN X BEIRUT

110 x 80cm
2024

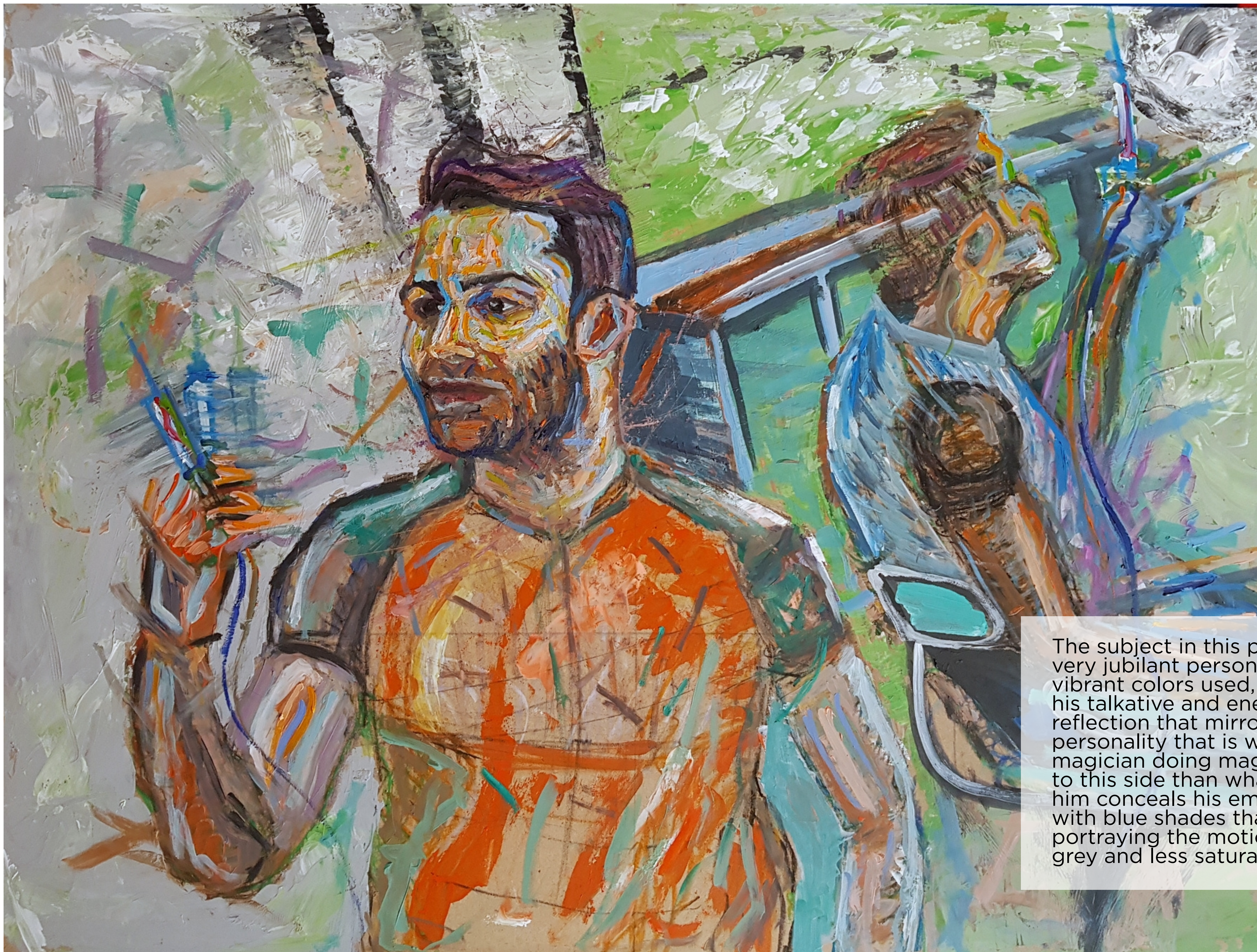
Standing as an overlooker of the city, Dan is etched as an unforgettable memory in this painting. He fell in love with Beirut and specifically wanted a Lebanese artist to paint him as a memento from Lebanon, which is why this painting was commissioned. Dan is presented with a dance between the vibrant blues and greens, depicting the psychology of colours against the lively cityscape in the background. The bold and defining brushstrokes along with the juxtaposition of cool and warm palettes create a sense of movement and dynamics and enhance this vivid and vibrant image, almost bringing it to life. They also reflect the push-and-pull effects of the shadows and highlights, depicting Dan in a fusion with the city that he fell in love with, Beirut.



UNICA

90 x 60 cm
2020

Painted on a blue background that symbolizes childhood is a joyful grandma next to an upset grandchild. I was commissioned to paint this scene by my client who recalls moments from her childhood when her grandma used to comfort her by giving her Unica chocolate bars. Their faces are painted with a wide spectrum of colors to clearly portray their expressions; the grandma being her cheerful and comforting self, while the child is



THE CLOWN PROJECT

80 x 60 cm
2021

The subject in this painting is a famous dermatologist with a very jubilant personality that is depicted in the bright and vibrant colors used, especially his orange shirt which reflects his talkative and energetic character. To his side is a reflection that mirrors his the successful medical side of his personality that is working the needle with ease, like a magician doing magic tricks to his audience. There is more to this side than what may appear, as the hidden side of him conceals his emotions like clowns do. This side is painted with blue shades that balance the orange in the painting, portraying the motion of his weapon: the needle, held in his grey and less saturated hands.



ELECTRIC FEEL 05

d= 50 cm

2021

Pictured in a dynamic position with an attempt to smoke a cigarette is a director friend of mine. The oceans of strong shades of blue provide the viewer with an electric feel, but are contradicted with a wide spectrum of colors in the subject's face to portray his personality. Looking closely to the right eye, a camera is cunningly hidden as a reference to my friend's eye of the camera in his director persona.



TURNING TABLES

70 x 50 cm

2021

Painted with a wide spectrum of colors and a motion blur style, the subject is in a constant state of motion. Not only in the painting he seems to be moving around a medium of colors, but also in his real life, the subject was seeking change and turning tables. An expression of confusion is held on his face as he ventures into the complex journey of life and experience the never ending cycle of change.



THE REVOLUTIONARY CHAIR

120 x 90 cm

2022

In an attempt to revolutionize my subject in this painting, who happens to be an art collector, I used an abstract style to move his still leg. On many occasions, my father's amputated leg is the inspiration behind my style of painting stagnant limbs in motion, such as in this painting. Although the subject appears to be in a sedentary position, his leg as well as his hands are depicted in motion via the lively brush strokes. The balance between the red chair and his white shirt surrounds his green dimensional reflection on the side. Under the surface of this still scene, the art collector appears to be moving all around the canvas while simultaneously still being seated between the vibrant colours.



100 x 70 cm
2022

**TIME
LAPSE**



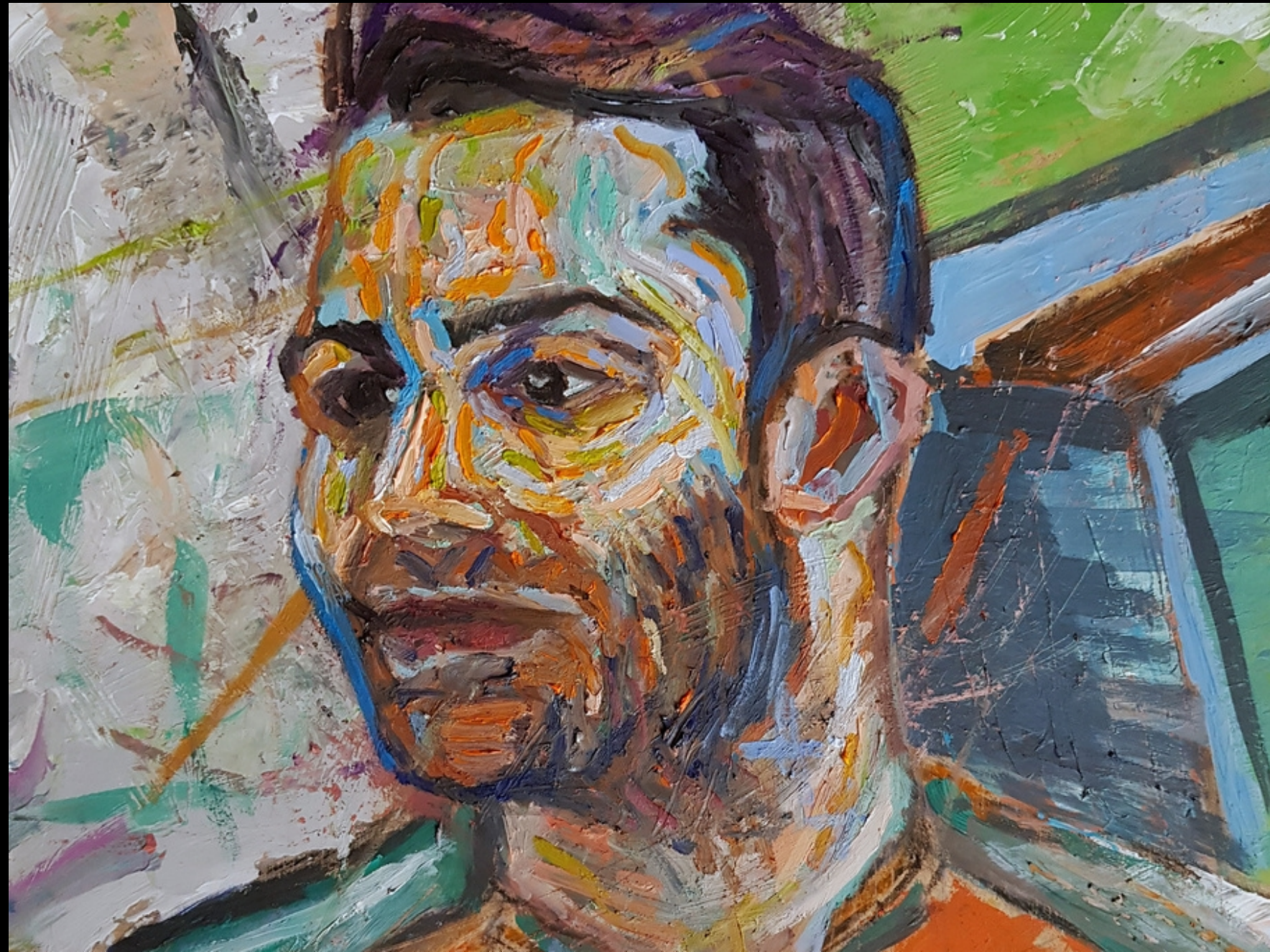
**ELECTRIC
FEEL 08**

75 x 60cm
2022

**ELECTRIC
FEEL 09**

75 x 60cm
2022





FIGURES IN MOTION

This is an experimenting series in which I experimented with slowing down time and painting subjects in motion, such as dancers while they are swaying their bodies. Once the motion is slowed and depicted in the painting, time is also slowed and blurred. The subjects are often seen to be stuck in a matrix of time and color as they attempt to move their bodies in different directions and towards many forces. I used a wide spectrum of bold and daring colors in almost all the paintings in this series to reflect my original abstract style.



NOSTALGIA

40 x 50cm

2022

The figure is shown to be laying down on the ground while its neck is set in a backwards motion, as if going back in time and remembering things from the past. The background is a mix of darker shades and vibrant colors to complete the abstract and daring overall atmosphere of the whole painting.



RESILIENT

110 x 80cm

2019

A powerful subject is shown to be trying to resist a strong force coming his way through his tilted standing posture. Yellow tones were used in this painting to give an effect of glow for the character and highlight the shadows around him.



ACCELERATE

d= 50 cm

2020

Behind the subject is a storm of atmospheric colors as he attempts to accelerate. This painting captures the seconds of acceleration with its vibrant colors and the blurred face in motion.

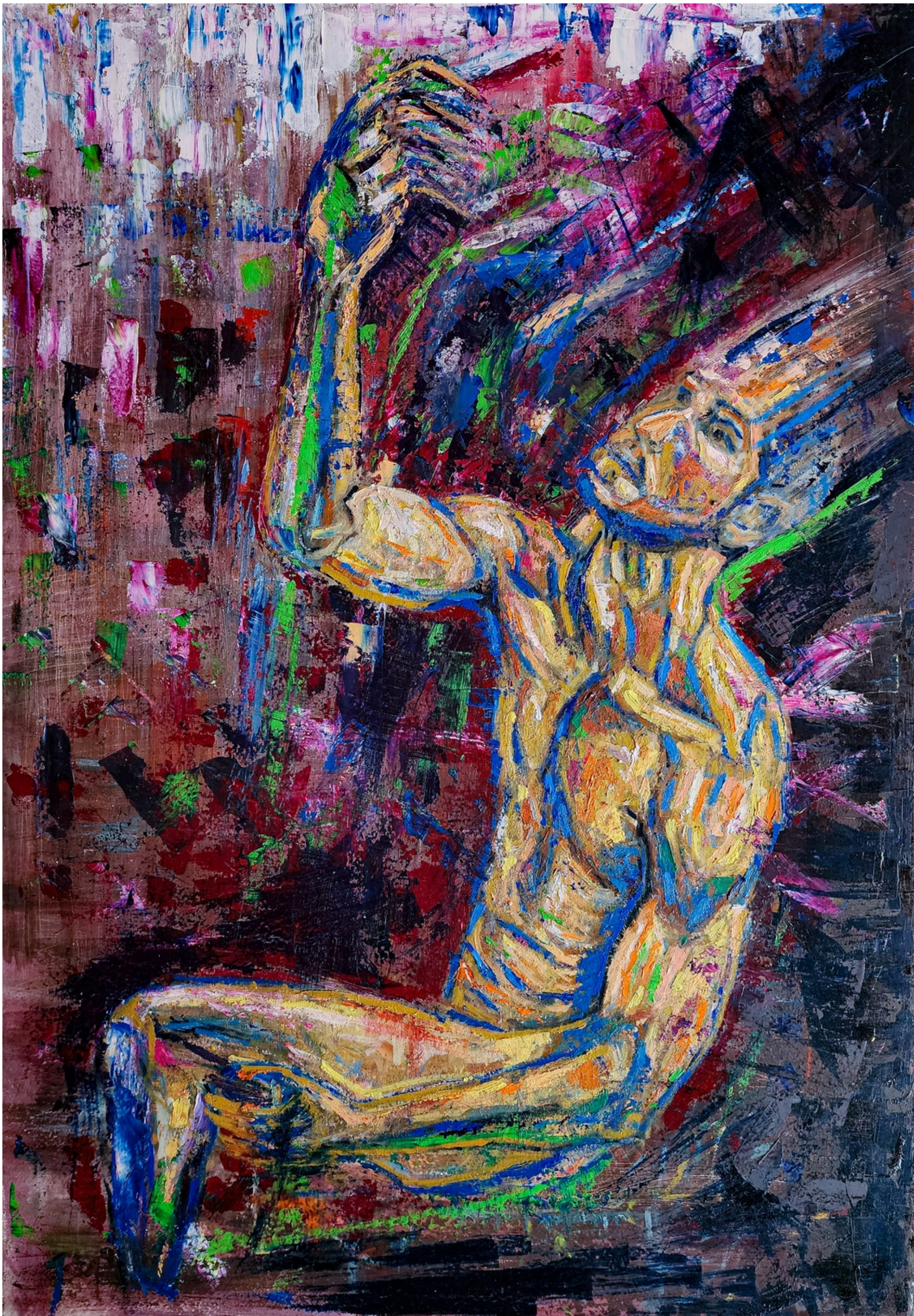


LEVITATE

120 x 90 cm

2021

The subject is attempting to levitate from the ground as he is drawn in an abstract style that depicts the motion of the body. He is painted in a dimensional structure that further emphasizes his motion, using a bold blue color in the background that contrasts the body and sheds attention on it.



ENLIGHTENED

100 x 70cm

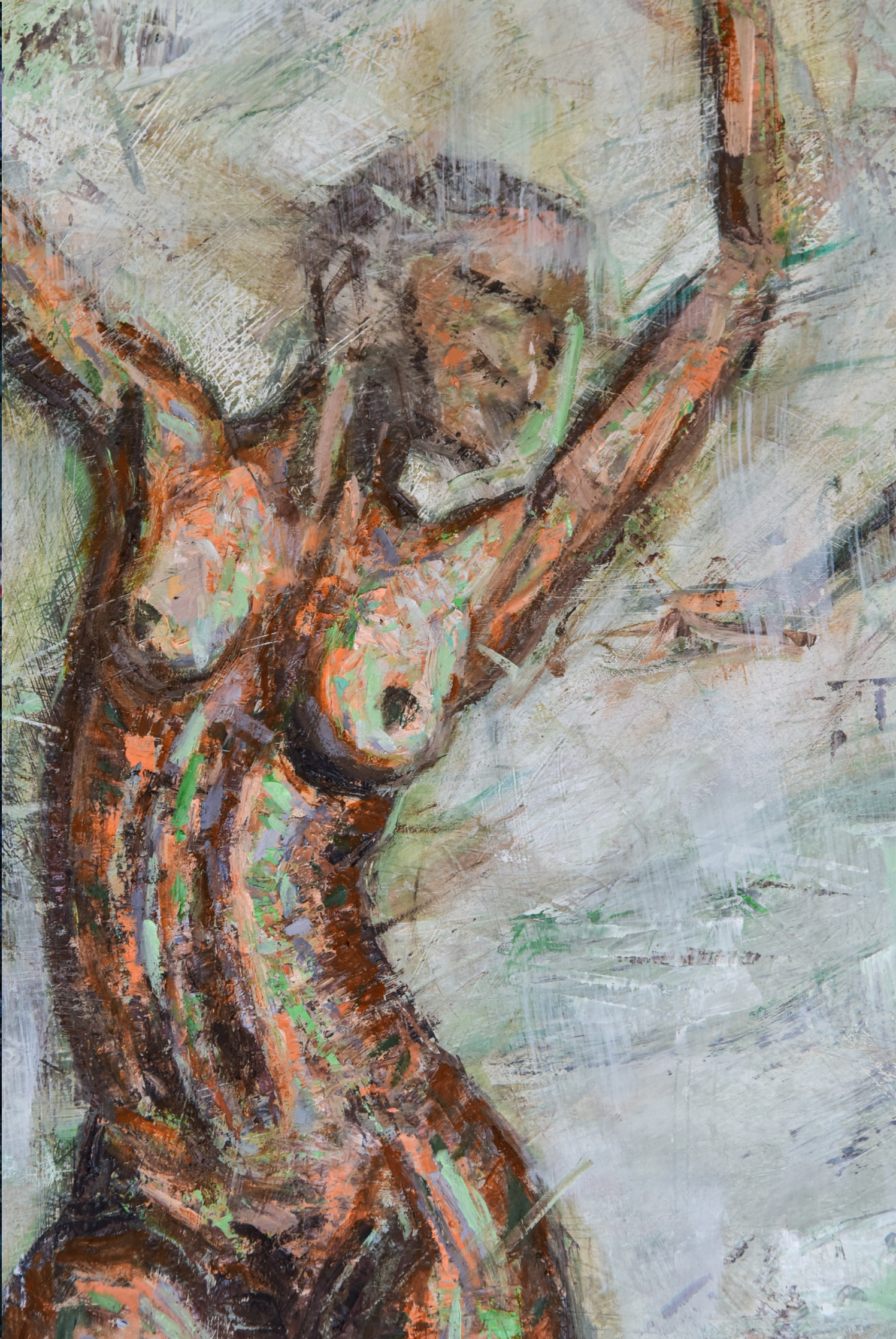
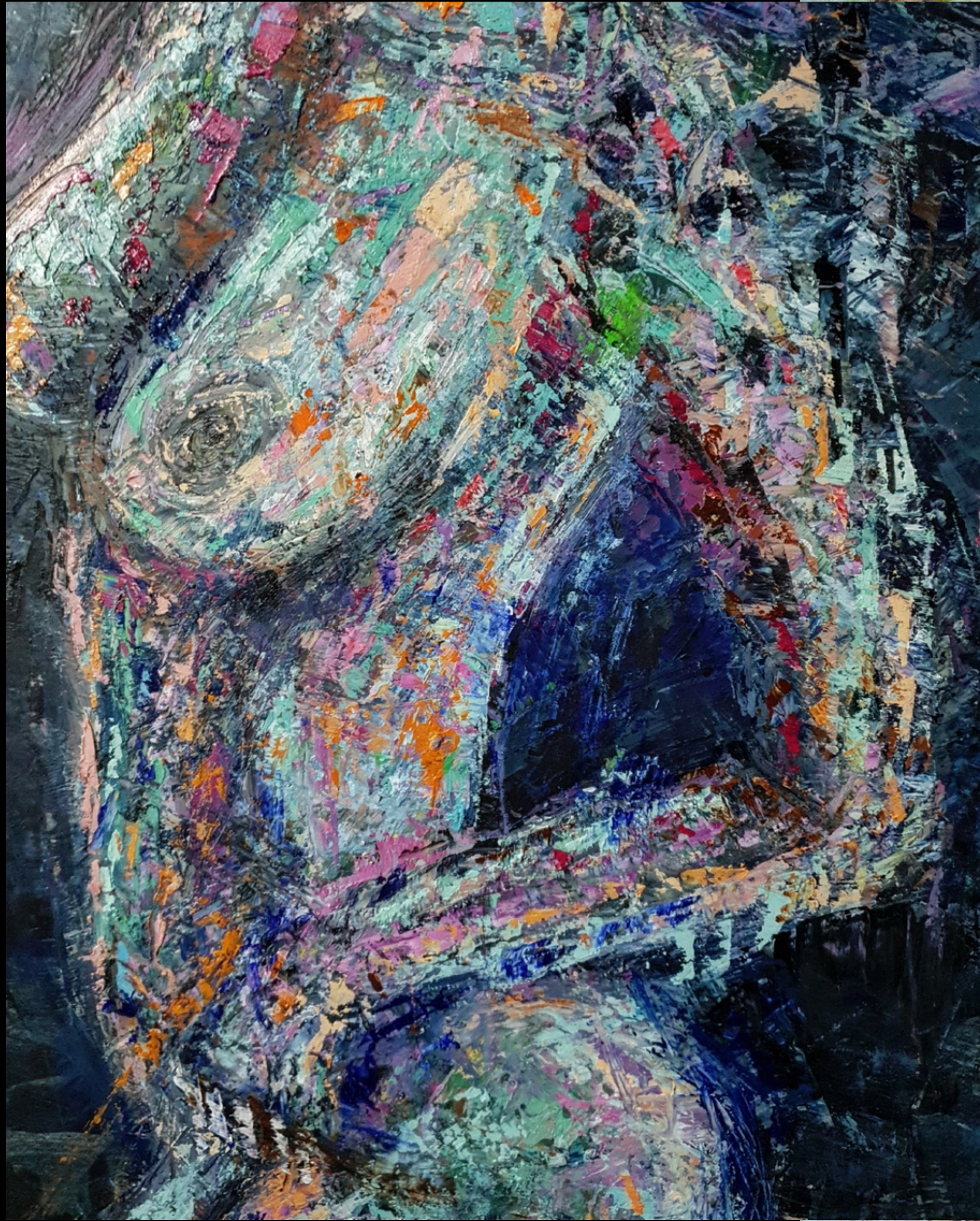
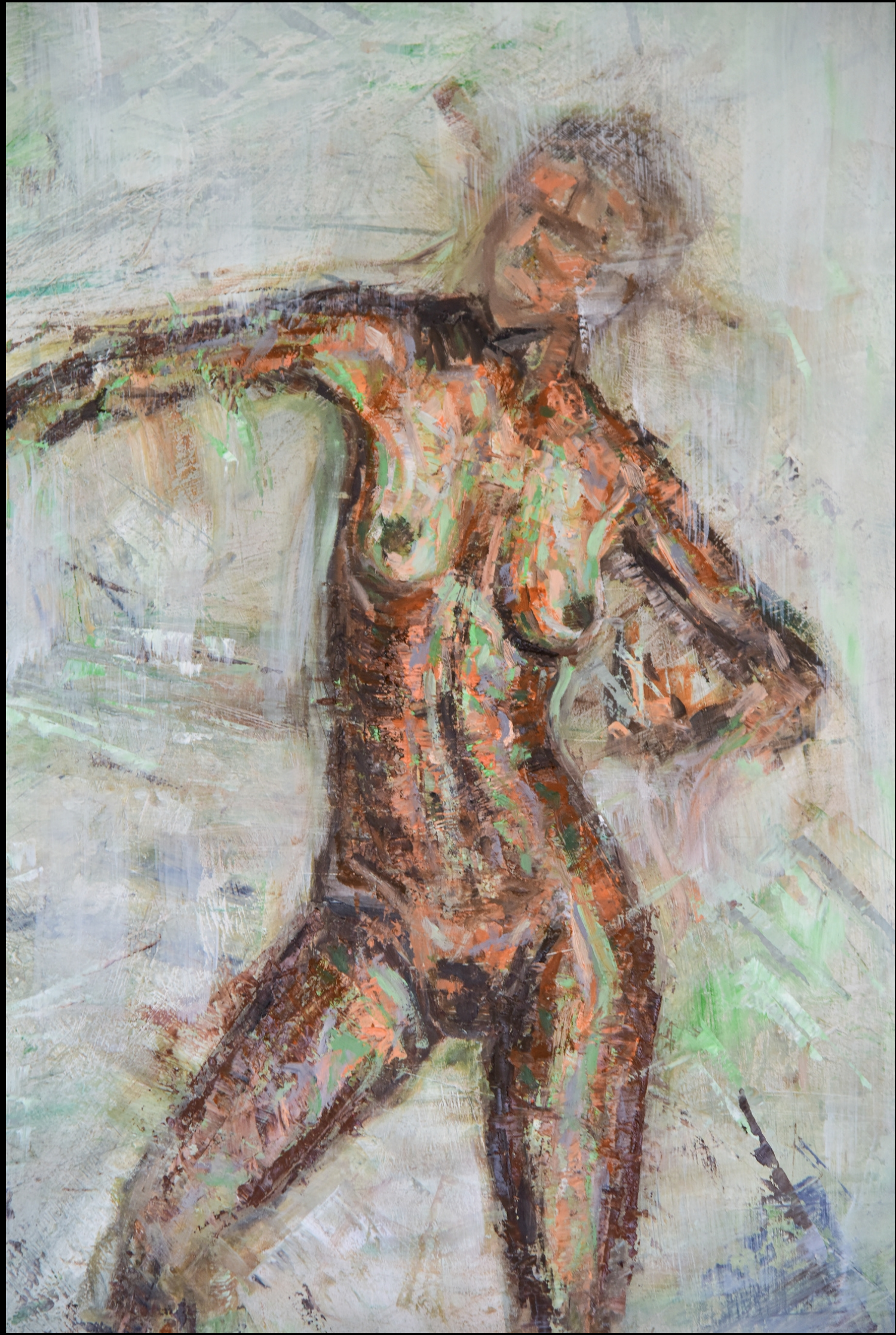
2022

Longing for an epiphany, this painting was a result of a very low point in my life. As a reflection of my mental state, I depicted this figure in the process of getting enlightened and escaping his darkest moments. His new found enlightenment guides him on his journey where he finally finds the light.

ELECTRIC FEEL THE CONCEPT

d = 80cm
2022





LANDSLIDES

Nature and its green pallet has always been a source of inspiration for my paintings and I. Considering that green is a very fresh color, and known for its affiliation with nature, this series has a lot of lively shades of green especially in its landslides. These paintings have a very realistic effect; when the viewer looks at them it's almost like he/she is transformed into the landslides and standing inside the canvas wondering: will the landslides bring us down?



LANDSLIDES 02

60 x 80cm
2021

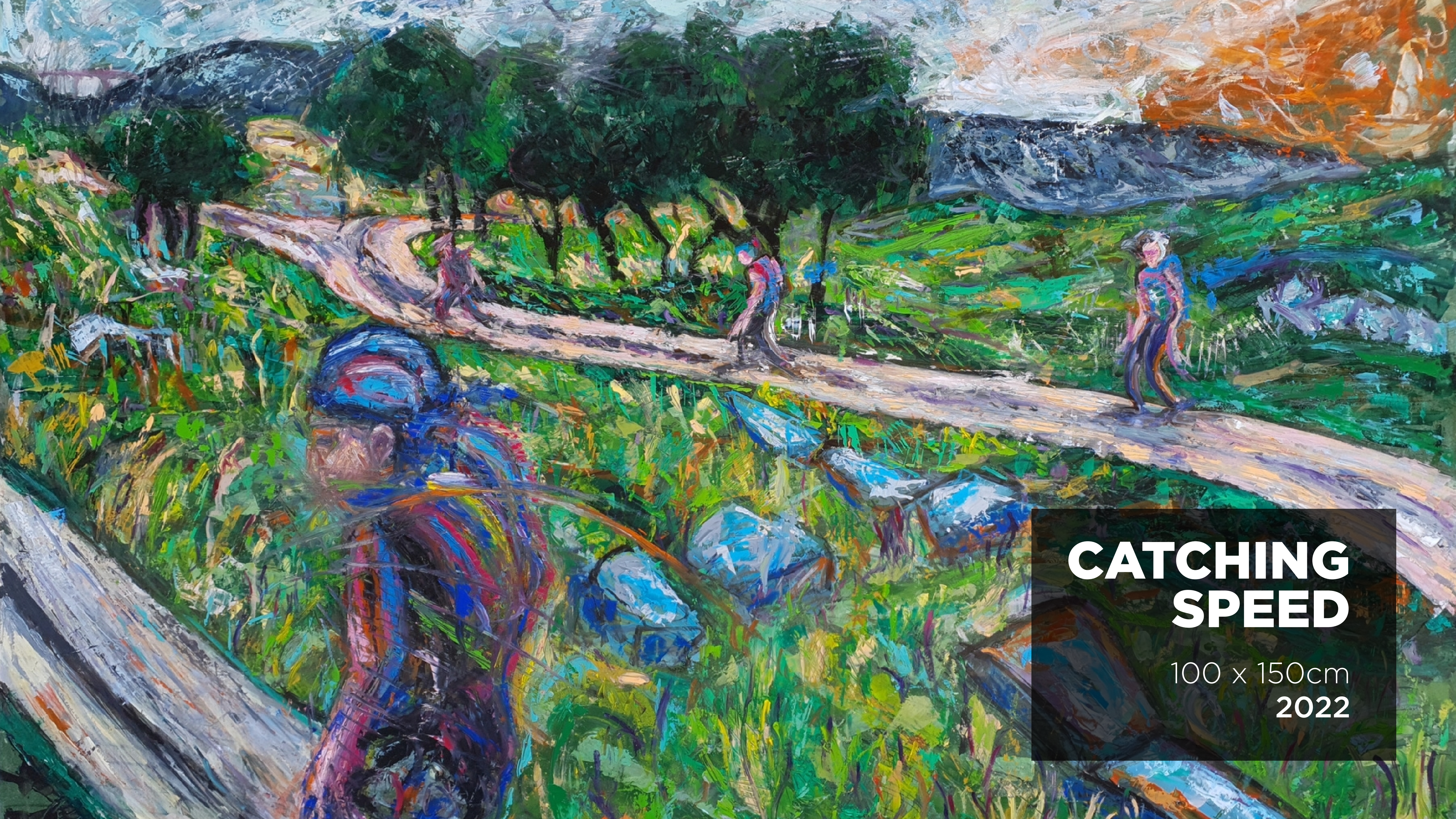
Although the shepherds are resting on the ground, they are in a daydream of escaping their reality. The psychological aspect of this painting can be applied to all the viewers, even to myself as a painter, because all of us are often in a state of escaping our realities.



LANDSLIDES 03

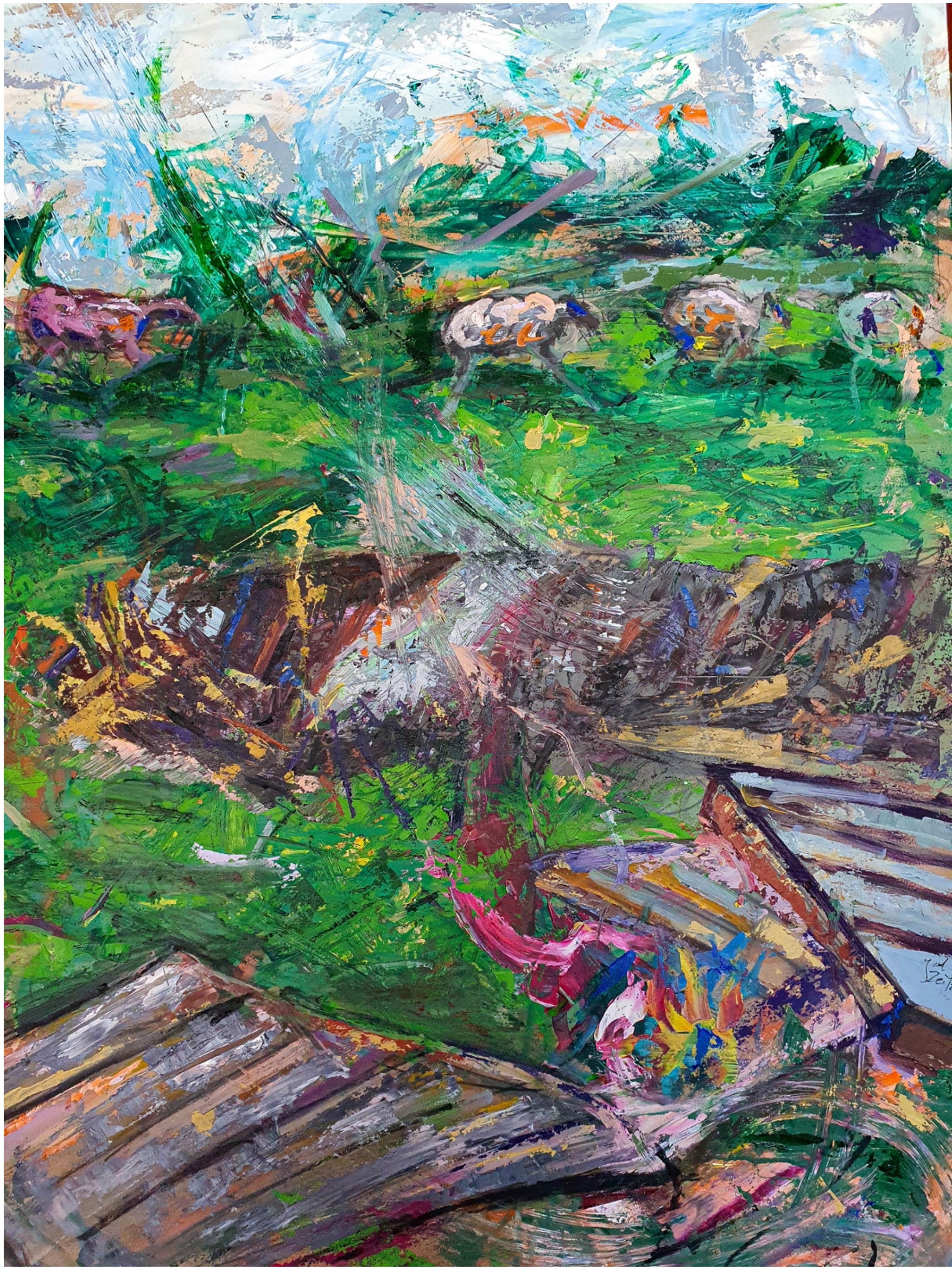
120 x 90cm
2021

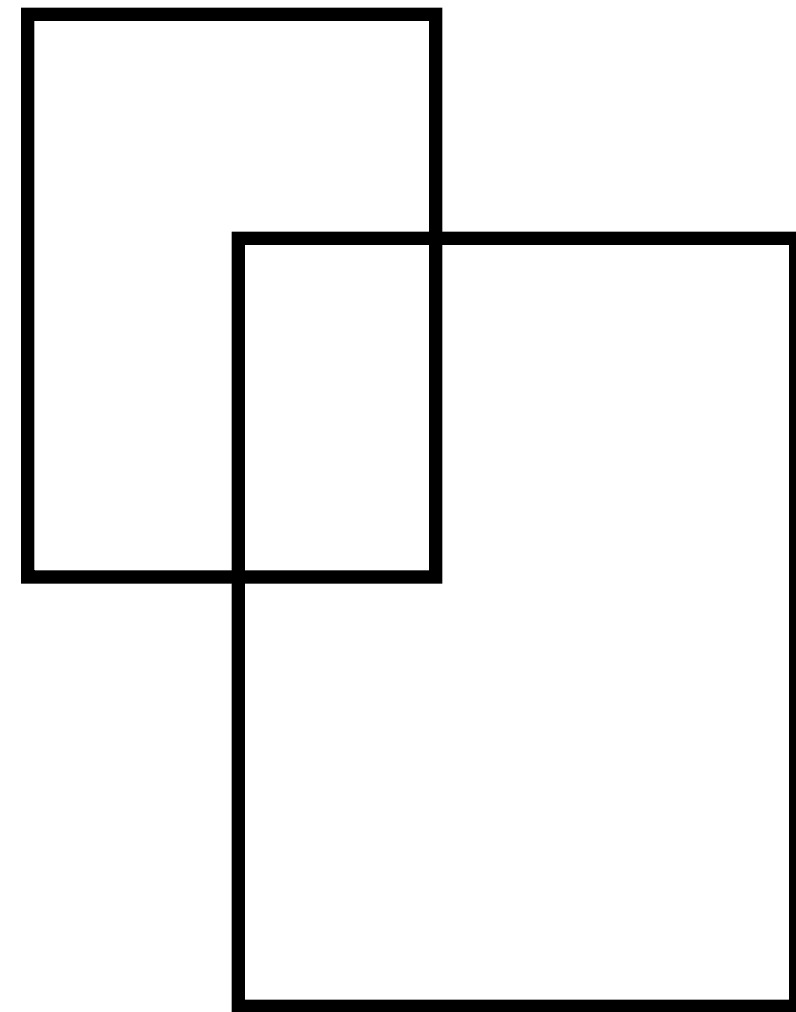
This painting depicts a scene from nature that shows things after they've been left behind using fresh green shades and a wide spectrum of colors. Barrels, grass cutters, and even a donkey can be seen moving into a pitfall with a non-ending destination, as if moving towards nowhere.



**CATCHING
SPEED**

100 x 150cm
2022





SECONDS AFTER THE BLAST

When a painter is approached to convert scenes from everyday life into paintings, it is important to clearly deliver the meaning of the painting while hiding his own twists and tricks in it. Before I paint my clients' requests, I make sure to get to know them more and connect with them on a deeper level so that I can reflect this deeper meaning in my paintings. Through my own unique style, I depict the subjects' personalities and inner conflicts using a wide spectrum of colors and shadows, with a varied range of saturation, and intense strokes of my brush. Forming a bridge between my vision of abstract and realism, I achieve my exclusive style language.



SECONDS AFTER THE BLAST 01

30 x 40 cm

2021

Longing for an epiphany, this painting was a result of a very low point in my life. As a reflection of my mental state, I depicted this figure in the process of



**SECONDS AFTER
THE BLAST 04**

2.8m x 1.4 x 6 cm

2021

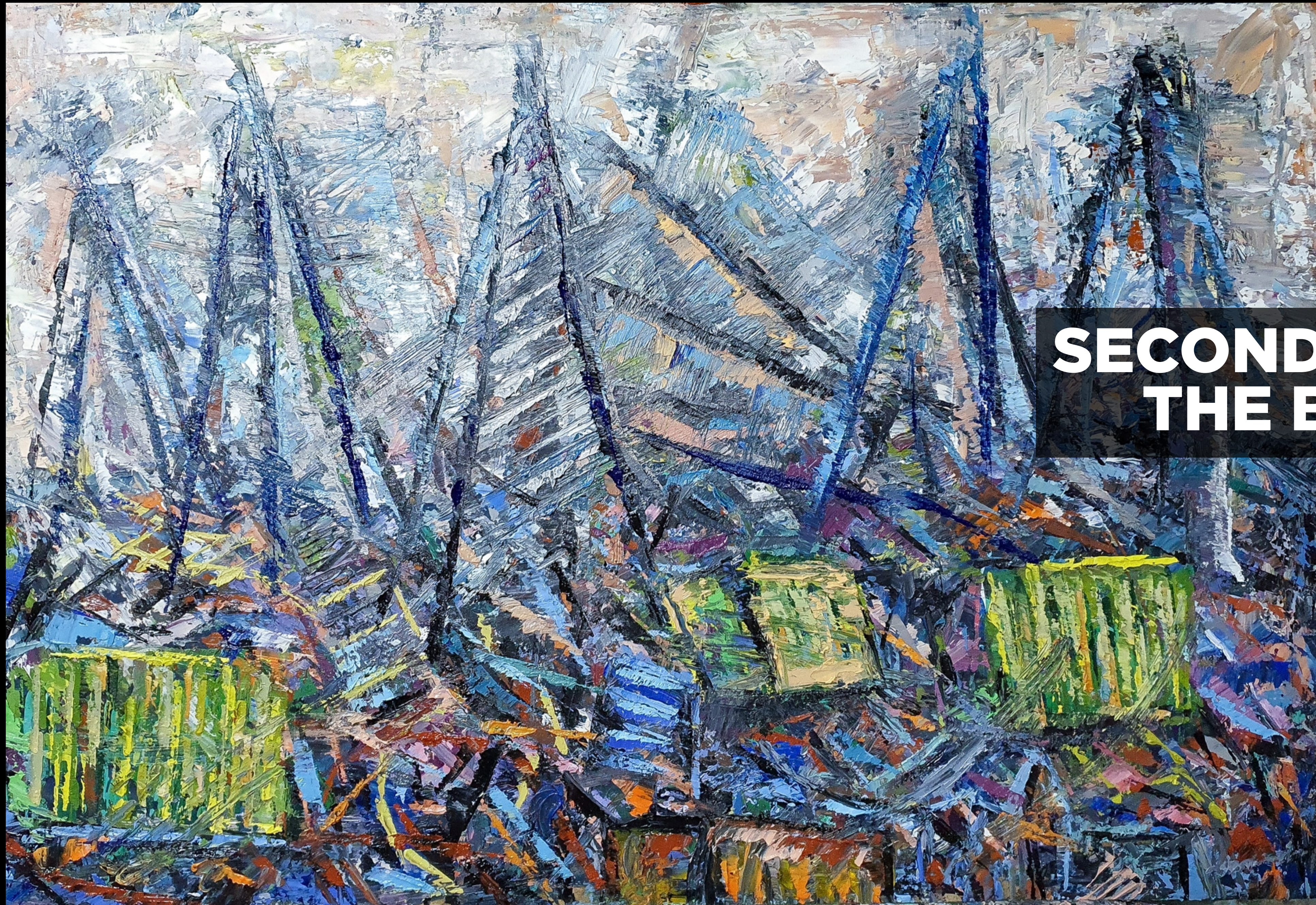


DEVASTATED

d= 60 cm

2021

A photographer took the picture of Liliane Souccar who lost her husband in the Beirut port explosion. I translated the photograph into this painting where she is pictured sitting on her bed overwhelmed by the sheer chaos that surrounds her as she ponders about the reality of what happened. The damage is shown through the abstract blizzard behind her, and her emotions are clearly reflected on her weary face. Although to some viewers she may seem scary, to me she represents hope for the people of Lebanon who are still showing resilience despite everything.



**SECONDS AFTER
THE BLAST 03**

30 x 40cm
2022



**SECONDS AFTER
THE BLAST 02**

30 x 40cm
2022

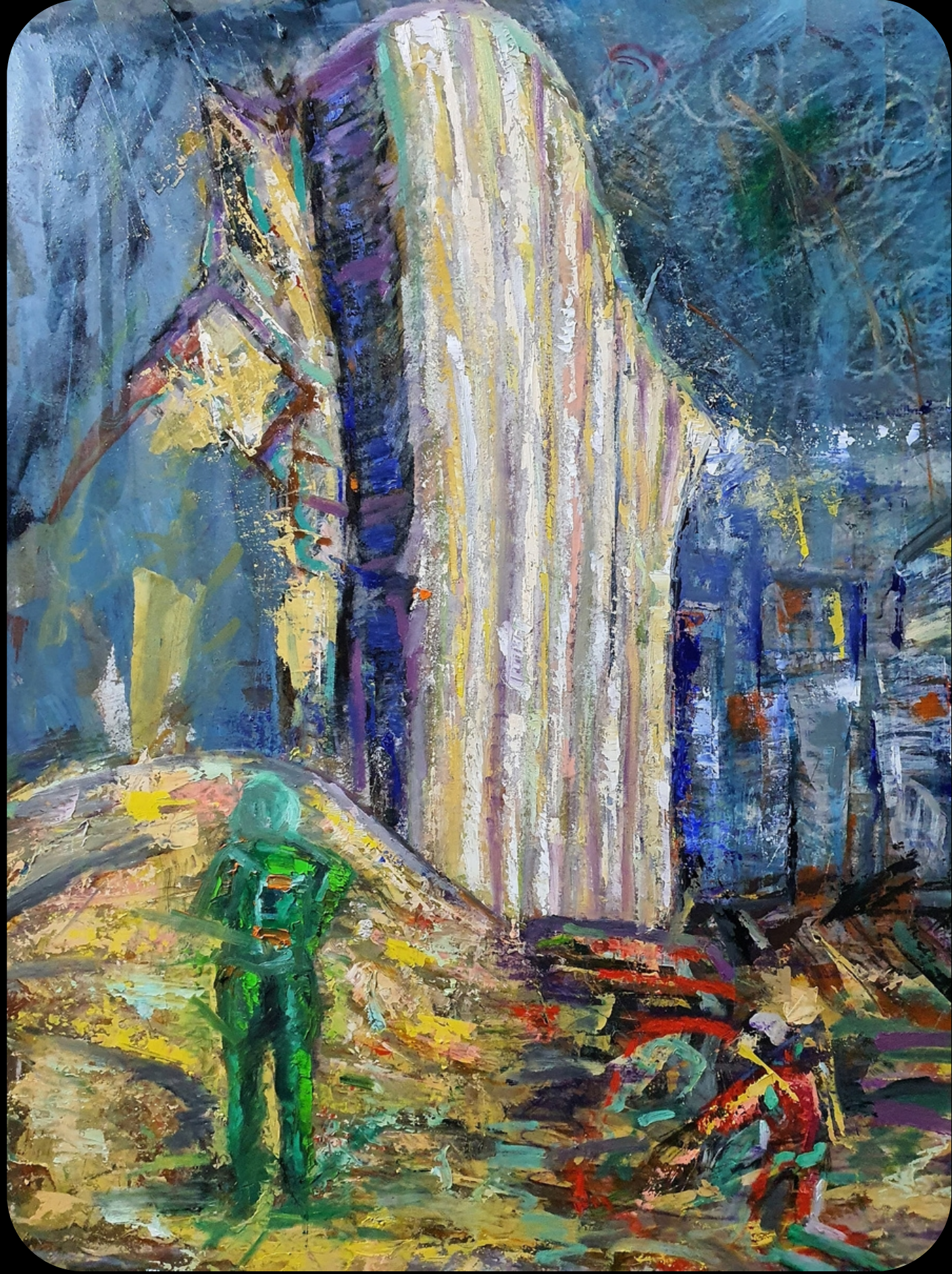


SECONDS AFTER THE BLAST 05

105 x 70cm

2022

Painted from a side angle, what is left of the port of Beirut stands tall among the chaos surrounding it. Some firefighters can be seen painted in red at the bottom of the painting, as they rush in motion for help. On the bottom left a figure is standing in surprise and devastation, looking at the damage. To some it may seem to be a green astronaut coming from space, as the scene at the port is out of this world, as if taking place on a different planet.



SELF-PORTRAIT SERIES

As a painter, I do not paint self-portraits out of arrogance but self-awareness. I like to present my authentic self through painting it in different detailed scenes from my everyday life. Through my paintings, I tackle the psychological side of my personality and present crystal clear emotions as they are. I consider myself an artist of my surroundings, and a subject exposed to raw emotions and behaviors like every other person. In a way, I am my clown reflecting my true self through my colors and brush strokes for my audience to analyze and interpret in the way that suits them best.



LAST DAY AT MY OLD STUDIO

100 x 65cm

2022

Like a Russian doll, this is a self-portrait that includes another self-portrait on the inside. In this painting, I stand in my old studio contemplating a previous self-portrait of mine while I'm surrounded by my colors, canvases, and brushes in my natural habitat. There is a wide spectrum of colors that accompany my sharp and defining brush strokes.



BATHROOM SELFIE

70 x 60cm
2020

In the bathroom, one is usually alone with himself as he is isolated in his private area. This self-portrait depicts my neutral and poker-face-like expression as I am pictured in a state of ease with myself. Some toiletry items are found at the bottom of the mirror to further set the setting of the painting. It is with defined and bold colors that I paint the most authentic version of myself to reflect my own daring and solid abstract style.



MIRROR SELFIE

75 x 60cm

2021

Rarely do we stop to appreciate the little details that we miss in our lives on daily basis, such as this mirror on the side of the road. As I am taking a mirror selfie on it, although that is not its original usage purpose, my free hand is in motion as life continues to move on behind where I am standing. The scene is captured in a bright spectrum of colors, ranging from fresh greens and blues to solid red and white on the roadside sign.



TIME WRAP

100 x 80 cm
2022

An abstract painting featuring two faces rendered with thick, expressive brushstrokes. The faces are composed of various colors including dark blues, greys, browns, and hints of yellow and red. The overall style is highly textured and gestural. The text 'SPECIAL PORTRAITS' is centered over the image in a bold, white, sans-serif font.

**SPECIAL
PORTRAITS**



Oh FRANCIS

80 x 70cm

2020

Known for his expressionism style and violent brush strokes that portray intense emotion, Francis Bacon is one of the most iconic painters of the 20th century. He soon became one of my sources of inspiration that crawled into my visions as my hands translated his portrait into this colorful juxtaposition of colors. His style never shied out of portraying forceful emotion, which in its turn affected my own style that is now formed around daring abstraction and vibrant colors. Through this painting of Francis, the artist himself became the art.



ELECTRIC FEEL

80 x 90 cm

2021

One of the most challenging portraits I had to paint is that of the Lebanese one and only jewel Fairuz; admired by many other artists like myself. Being accompanied by the inspiration from her lyrics and tunes since childhood, I was able to add my own twist on this portrait. I translated my admiration for the singer into this lively painting that portrays her in the motion of singing and playing the tambour with her hands. Using a unique design language with vibrant colors and defined brush strokes, the painting offers an electric feeling for the viewer and transcends him/her into one of Fairuz's songs.



FATHER FIGURE

80 x 60cm
2021

Despite my father having an amputated leg, he is sitting in a cheerful manner on a couch alongside our pet Mars who always comforts him. Next to him is his wheelchair that is set in a dynamic motion, for it is always helping him move around. He always envisions life in a positive manner and helps himself to get through the obstacles he faces. This optimism of his is reflected in the vibrant colors of the painting that emphasize his determination.



TIME WRAP 02
ANDY WARHOL

120 x 100 cm
2022

RADIANT-X

SERIES UNDER DEVELOPEMENT
2024

This is an experimental series inspired mainly by x-rays that I had done in my childhood when I was suffering from asthma. I experimented with one key color for each painting but with a wide range of shades from the same color scheme. The radiation is evident in the backgrounds that surround the figures, creating an x-ray effect. However, each painting differs from the other as each one represents a specific human emotion that reflects the inner self and soul of the figure. That's why the X factor in the title of each painting stands for each different emotion conveyed in the respective painting. Just like the electromagnetic spectrum has a wide spectrum of electromagnetic radiation, the human emotions have a very wide range as well and they differ from one person to another.



**RADIANT-X
01**

30 x 40cm
2021



**RADIANT-X
02**

120 x 48cm
2021



**RADIANT-X
03**

120 x 48cm
2020



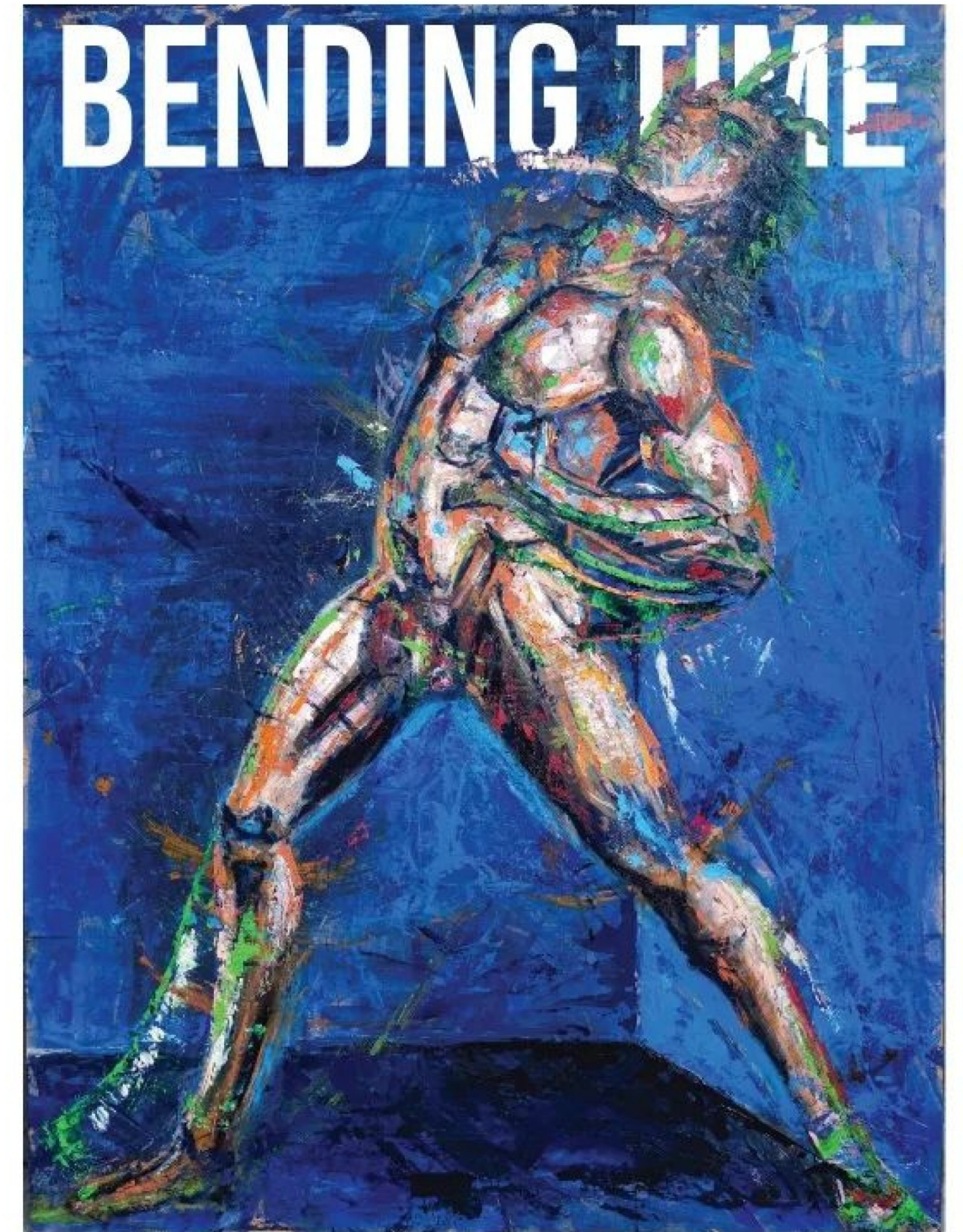
RADIANT-X
05

90 x 60 cm
2022



SOLO EXHIBITION

Jad Zeitouni, a self-taught artist, draws inspiration from Albert Einstein's general theory of relativity. He applies this concept to his art, exploring the fabric of space-time. According to Einstein, gravity results from curves and bends in space-time. Jad's paintings depict distorted figures and landscapes, defying gravity. In his exhibition, he further explores iconic personas through wormholes, inviting the audience to contemplate bending time and space.



OPENING THURSDAY SEPTEMBER 22ND, 2022 // 6:30

BENDING TIME
By **Jad Zeitouni**

Art Exhibition
September 22 - 25



Kalim art space, hamra
Opening hours 6:30 - 9 pm

COLLECTIVE EXHIBITION

SAATCHI GALLERY
2024

Jad Zeitouni

/SAATCHI GALLERY

June 22nd

Exhibition 3:00 pm

Auction 7:00 pm



UNDER THE PATRONAGE OF
HH FAISAL S.M. AL SAUD

WOMEN'S GROWTH AND SUCCESS FOUNDATION

6th Konooz Fine Art
Auction



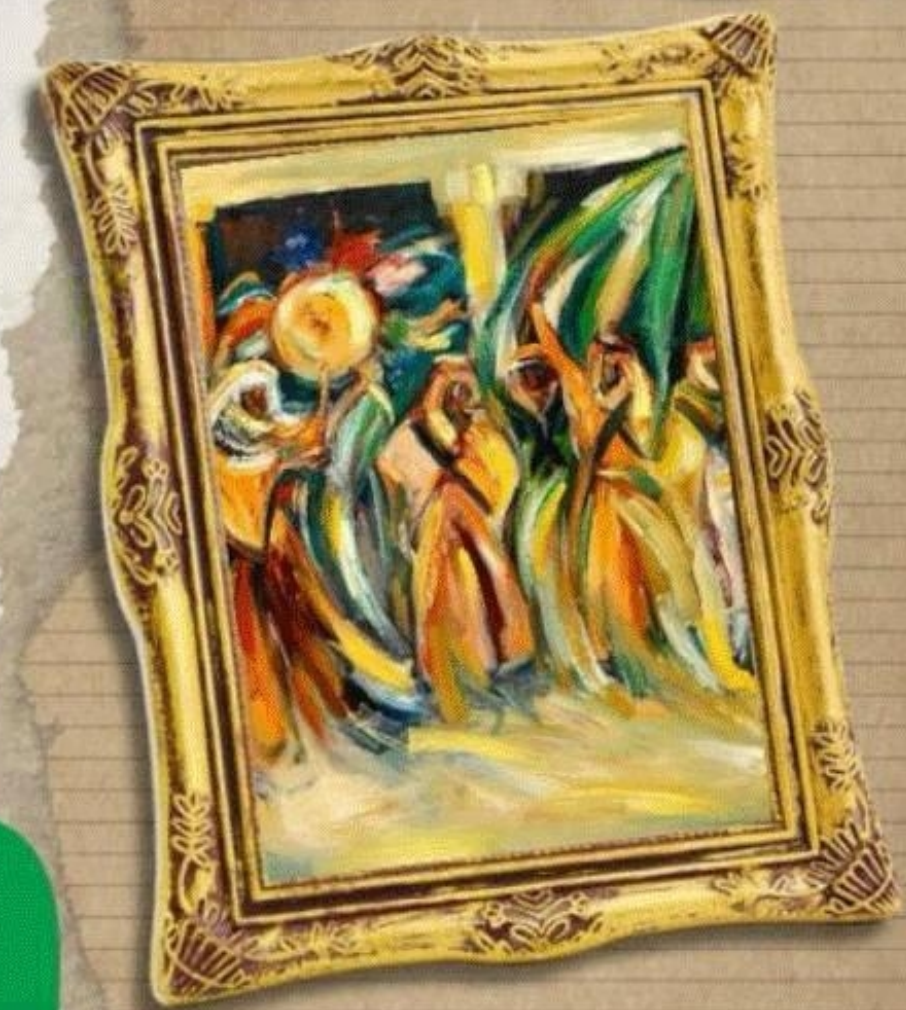
DATE

22nd JUNE 2024

EXHIBITION AT 3:00 PM AUCTION AT 7:00 PM

VENUE

SAATCHI GALLERY, DUKE OF YORK, KINGS ROAD,
LONDON. SW3 4RY, UK



**THANK
YOU**

